



**ORDER GUIDE
U25F & KBH KITS**

US 2020.3_3

Pricing & Specifications subject to change without notice

QUICK ORDER CRANE KITS

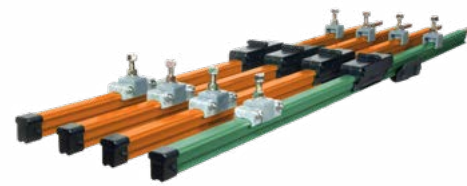
SUMMARY

Each VAHLE Quick Order Kit includes all required components for installation and offer additional options and spares. Available in a variety of common lengths, VAHLE Quick Order Kits provide a simple method for choosing innovative and quality electrification solutions to common overhead crane applications. Choose from two varieties of KBH (63 or 100 amp) or our newest insulated conductor innovation - U25/75F, rated at 100 amps. These turnkey solutions are low maintenance, cost-effective and each product is backed by over 100 years of proven engineering and technical knowledge.



KBH Enclosed Conductor System

PVC housing with four copper conductors internally mounted. Available in 63 or 100 amp versions. Each kit includes the required components for installation and operation.



U25/75F Insulated Conductor System

Individual galvanized steel conductors with PVC housing. Rated at 100 amps. Each kit is supplied in standard three PH & one PE configuration. Each kit includes the required components for installation and operation.

HOW TO ORDER

To order, first simply identify the desired conductor bar solution, then the required length for your application. Order numbers allow for clear identification of conductor bar and system length.

See examples below for details. For lengths not shown, select next highest available. Product can be cut to length on site. See pages 6-7 for optional and spare components.

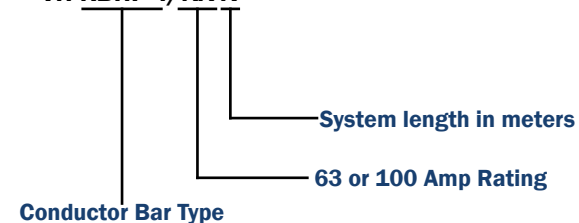
EXAMPLE ORDERS:

VH-KBHF 4/63-20 = 20 meter, 4 conductor 63 amp KBHF system with 4 conductors rated at 63 amps.

VH-KBHF 4/100-46/0 = 46 meter KBHF system with 4 conductors rated at 100 amps.

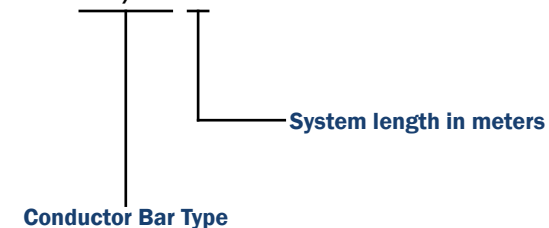
KBH ORDER NUMBERING SCHEME

VH-KBHF 4/XX-X



U25 ORDER NUMBERING SCHEME

VH-U25/75F-X



KBHF SYSTEM KITS

KBHF 4/63 KITS - ORDER NO & PRICING

Order No.	System Length (FT)	Amp Rating ^(1/2)	Kit Price
VH-KBHF 4/63-4	4 meters (13.12)	63	\$673.84
VH-KBHF 4/63-6	6 meters (19.68)	63	\$855.41
VH-KBHF 4/63-8	8 meters (26.24)	63	\$898.28
VH-KBHF 4/63-10	10 meters (32.80)	63	\$1,061.95
VH-KBHF 4/63-12	12 meters (39.36)	63	\$1,104.81
VH-KBHF 4/63-14	14 meters (45.92)	63	\$1,268.48
VH-KBHF 4/63-16	16 meters (52.48)	63	\$1,311.35
VH-KBHF 4/63-18	18 meters (59.04)	63	\$1,475.02
VH-KBHF 4/63-20	20 meters (65.60)	63	\$1,517.89
VH-KBHF 4/63-22	22 meters (72.16)	63	\$1,681.56
VH-KBHF 4/63-24	24 meters (78.72)	63	\$1,724.43
VH-KBHF 4/63-26	26 meters (85.28)	63	\$1,888.10
VH-KBHF 4/63-28	28 meters (91.84)	63	\$1,930.97
VH-KBHF 4/63-30	30 meters (98.40)	63	\$2,094.64
VH-KBHF 4/63-32	32 meters (104.96)	63	\$2,137.50
VH-KBHF 4/63-34	34 meters (111.5)	63	\$2,301.17
VH-KBHF 4/63-36	36 meters (118.1)	63	\$2,344.04
VH-KBHF 4/63-38	38 meters (124.6)	63	\$2,507.71
VH-KBHF 4/63-40	40 meters (131.2)	63	\$2,550.58
VH-KBHF 4/63-42	42 meters (137.8)	63	\$2,714.25
VH-KBHF 4/63-44	44 meters (144.3)	63	\$2,757.12
VH-KBHF 4/63-46	46 meters (150.9)	63	\$2,920.79

KBHF 4/100 KITS - ORDER NO & PRICING

Order No.	System Length (FT)	Amp Rating ⁽²⁾	Kit Price
VH-KBHF 4/100-4	4 meters (13.12)	100	\$803.29
VH-KBHF 4/100-6	6 meters (19.68)	100	\$1,010.33
VH-KBHF 4/100-8	8 meters (26.24)	100	\$1,068.97
VH-KBHF 4/100-10	10 meters (32.80)	100	\$1,258.12
VH-KBHF 4/100-12	12 meters (39.36)	100	\$1,316.76
VH-KBHF 4/100-14	14 meters (45.92)	100	\$1,505.90
VH-KBHF 4/100-16	16 meters (52.48)	100	\$1,564.54
VH-KBHF 4/100-18	18 meters (59.04)	100	\$1,753.69
VH-KBHF 4/100-20	20 meters (65.60)	100	\$1,812.33
VH-KBHF 4/100-22	22 meters (72.16)	100	\$2,001.47
VH-KBHF 4/100-24	24 meters (78.72)	100	\$2,060.12
VH-KBHF 4/100-26	26 meters (85.28)	100	\$2,249.26
VH-KBHF 4/100-28	28 meters (91.84)	100	\$2,307.90
VH-KBHF 4/100-30	30 meters (98.40)	100	\$2,497.05
VH-KBHF 4/100-32	32 meters (104.96)	100	\$2,555.69
VH-KBHF 4/100-34	34 meters (111.52)	100	\$2,744.83

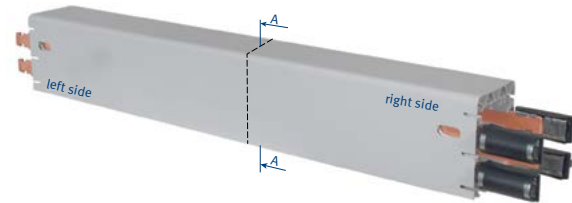
KBHF SYSTEM KITS

KBHF 4/100 KITS - ORDER NO & PRICING CONT.

Order No.	System Length (FT)	Amp Rating ⁽¹⁾	Kit Price
VH-KBHF 4/100-36	36 meters (118.08)	100	\$2,803.47
VH-KBHF 4/100-38	38 meters (124.64)	100	\$2,992.62
VH-KBHF 4/100-40	40 meters (131.20)	100	\$3,051.26
VH-KBHF 4/100-42	42 meters (137.76)	100	\$3,240.40
VH-KBHF 4/100-44	44 meters (144.32)	100	\$3,299.05
VH-KBHF 4/100-46	46 meters (150.88)	100	\$3,488.19
VH-KBHF 4/100-48	48 meters (157.44)	100	\$3,546.83
VH-KBHF 4/100-50	50 meters (164.00)	100	\$3,735.98
VH-KBHF 4/100-52	52 meters (170.56)	100	\$3,794.62
VH-KBHF 4/100-54	54 meters (177.12)	100	\$3,983.76
VH-KBHF 4/100-56	56 meters (183.68)	100	\$4,042.40
VH-KBHF 4/100-58	58 meters (190.24)	100	\$4,231.55
VH-KBHF 4/100-60	60 meters (196.80)	100	\$4,290.19
VH-KBHF 4/100-62	62 meters (203.36)	100	\$4,479.33

COMPONENT GUIDE

Every KBHF Quick Order Kit provides all required components for installation and operation including feeds, joints & hanger brackets. KBHF 4/63 kits and KBHF 4/100 kits use respective end feeds listed below. The quantity of certain components provided in each kit depends on system length. Additional spare parts and mounting options are available, see pages 6-7. For detailed component information, see KBH catalog.



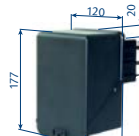
KBH Conductor bar

Supplied in 4m or 2m lengths. Quantity determined by system length.



End Feed

63 Amp version. One per system



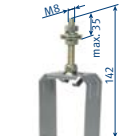
End Feed

100 Amp version. One per system



Joint Cap/End Cap

One end cap per system. Joint cap quantity determined by system length



Sliding Hanger

Quantity determined by system length



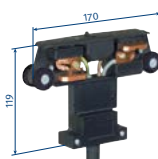
Fixpoint Hanger

One per system



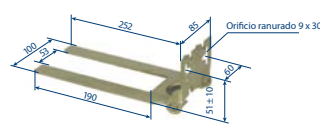
L-Bracket

One per hanger



KSW Collector⁽²⁾

Two per system



Tow Arm

Two per system

⁽¹⁾ 100% Duty Cycle
⁽²⁾ Rated 40A @ 60% Duty Cycle

Pricing and specifications subject to change without notice.

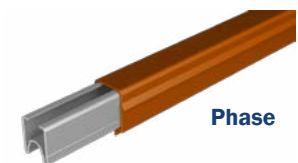
U25/75 F SYSTEM KITS

ORDER NO & PRICING

Order No.	System Length (FT)	Amp Rating ⁽¹⁾	List Price
VH-U25/75F-3	3 meters (9.84)	100	\$1,346.14
VH-U25/75F-6	6 meters (19.68)	100	\$1,608.54
VH-U25/75F-9	9 meters (29.52)	100	\$1,870.94
VH-U25/75F-12	12 meters (39.36)	100	\$2,133.34
VH-U25/75F-15	15 meters (49.20)	100	\$2,395.74
VH-U25/75F-18	18 meters (59.04)	100	\$2,658.14
VH-U25/75F-21	21 meters (68.88)	100	\$2,920.54
VH-U25/75F-24	24 meters (78.72)	100	\$3,182.94
VH-U25/75F-27	27 meters (88.56)	100	\$3,445.34
VH-U25/75F-30	30 meters (98.40)	100	\$3,707.74
VH-U25/75F-33	33 meters (108.24)	100	\$3,970.14
VH-U25/75F-36	36 meters (118.08)	100	\$4,232.54
VH-U25/75F-39	39 meters (127.92)	100	\$4,494.94
VH-U25/75F-42	42 meters (137.76)	100	\$4,757.34
VH-U25/75F-45	45 meters (147.60)	100	\$5,019.74
VH-U25/75F-48	48 meters (157.44)	100	\$5,282.14
VH-U25/75F-51	51 meters (167.28)	100	\$5,544.54
VH-U25/75F-54	54 meters (177.12)	100	\$5,806.94
VH-U25/75F-57	57 meters (186.96)	100	\$6,069.34
VH-U25/75F-60	60 meters (196.80)	100	\$6,331.74

COMPONENT GUIDE

Every U25F quick order kit provides all required components for installation and operation including feeds, joints & hanger brackets. U25 system kits consist of three PH and one PE configuration. The quantity of certain components provided in each kit depends on system length. Additional spare parts and mounting options are available, see page 6-7. For detailed component information, see U25 catalog.



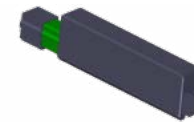
Phase



Ground (PE)

U25 Conductor bar

Supplied in 3m lengths. 3 phase & 1 ground configuration. Quantity determined by system length.



End Feed

One per system



Compact Hanger

Quantity determined by system length



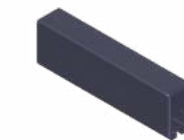
Locating Clamp

Eight per system



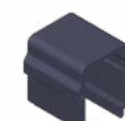
L-Bracket

One per hanger



Bolted Joint⁽²⁾

Quantity determined by system length.



End Cap

One per system



Collectors⁽³⁾

Two collector sets per system. Collector set consist of 3 PH & 1 PE



Collector Bracket

One per system

⁽¹⁾ 100% Duty Cycle
⁽²⁾ Bolted joint may double as feed.
⁽³⁾ Rated 55A @

Pricing and specifications subject to change without notice.

OPTIONAL ACCESSORIES

RADIO CONTROLS

Eliminate traditional bridge festoon and cable chain solutions by combining VAHLE Quick Order Kits with single or dual hoist radio controls. For use with either KBH or U25 kits, VAHLE offers an economical but advanced radio control system featuring digital bi-directional communication. Radio kits include receiving units, transmitters, batteries, mounting hardware and installation instructions.



Wireless radio receiver



Wireless radio transmitter

ORDER NO & SPECIFICATIONS

Model	Kit Price	Speed	Hoists	Receivers	Transmitters	Channels	Buttons	Communication	Operating Range
VH-IMSRAD	\$2,158.33	Two	Single	Two	Two	140	6	Bi-directional	300 ft
VH-IMTRAD	\$3,325.00	Two	Dual	Three	Two	140	6	Bi-directional	300 ft

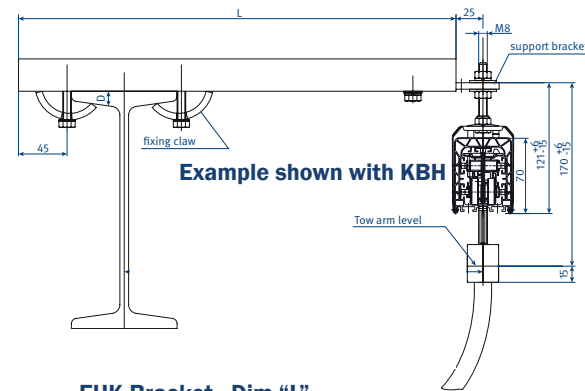
MOUNTING BRACKETS⁽¹⁾



VH-GOBR1



EHK Bracket



EHK Bracket - Dim "L"

Order No.	Kit Price	Description	Length
VH-GOBR1	\$22.50 ea.	Unistrut clamp bracket	12"
251 600	\$28.40 ea.	EHK 250 Bracket	14" (Dim: L)
251 610	\$32.10 ea.	EHK 300 Bracket	16" (Dim: L)
251 620	\$27.80 ea.	EHK 400 Bracket	20" (Dim: L)
251 630	\$35.30 ea.	EHK 500 Bracket	24" (Dim: L)

* Additional EHK lengths available on request

SPARE COMPONENTS

KBH SYSTEM KITS

Order No.	Description	Type	Kit Price
600 010	63 amp End feed	KKE 4/63 HS	\$103.60
600 422	100 amp End feed	KKE 4/63-100 HS	\$191.80
600 005	Joint Cap	KVM	\$7.70
600 000	Sliding Hanger	KGA	\$9.90
600 007	Fixpoint Hanger	KFA	\$12.90
VH-ODUT400	L-Bracket	-	\$8.00
600 096.1	Collector	KSW 4/40-1	\$141.20
600 888	Tow Arm	MGFN	\$34.20
600 008	End cap	KE	\$17.60

U25/75 F SYSTEM KITS

Order No.	Description	Type	Kit Price
VH-U25CEF	End feed (PH)	-	\$16.10
VH-U25CEF1	End feed (PE)	-	\$16.10
170 840	Compact hanger	KA 25/4	\$15.40
170 010	Locating clamp	USK 25 K4	\$10.50
170 595	Bolted joint	UV 25	\$22.40
170 013	End cap	UK 25-L	\$6.80
VH-ODUT400	L-Bracket	-	\$8.00
154 443.2	PH Collector	KSTL 55	\$113.60
154 444.2	PE Collector	KSTL 55	\$126.40
VH-D153506	Collector bracket	-	\$46.10

⁽¹⁾ All kits include standard L-brackets for mounting.

Pricing and specifications subject to change without notice.

Pricing and specifications subject to change without notice.



VAHLE Incorporated.
407 Cane Island Pkwy.
Katy, TX 77494

Tel.: 713-465-9796
Fax: 713-465-1851
E-Mail: salesinbox@vahleinc.com

www.vahleinc.com

US | Rev. 3.3 | JAN 2020 | Errors and technical modifications subject to change without notice.

FOLLOW US @VAHLEINC.

